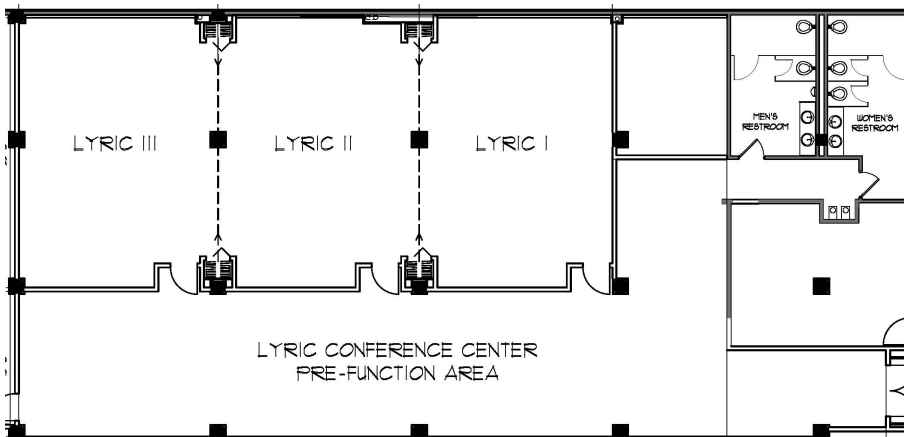
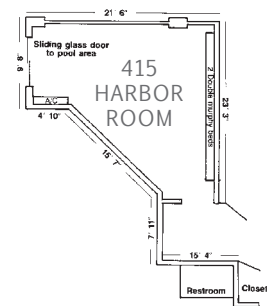
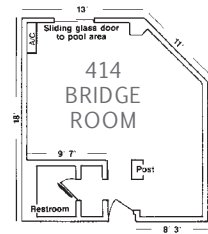
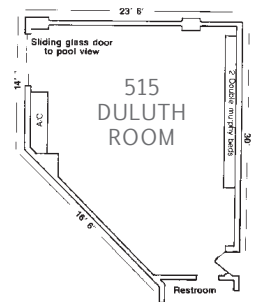
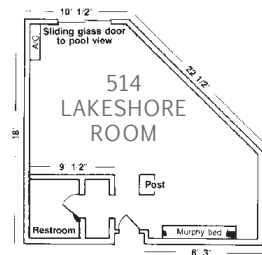
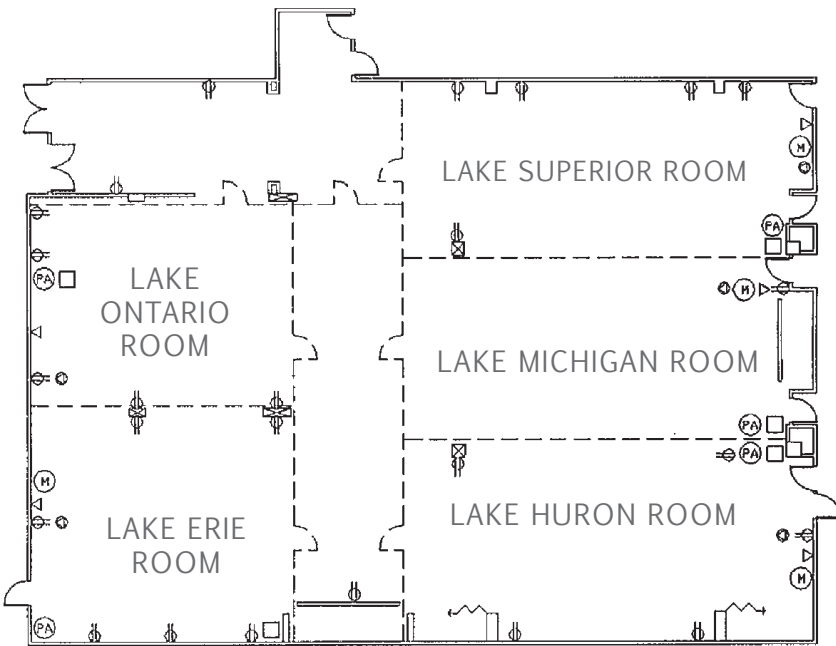


# Holiday Inn Meeting Room Specifications

	Dimensions	Squarefeet	Height	Rounds	Theater	Conference	Classroom
<b>Ballroom &amp; Lyric Conference Center</b>							
Great Lakes Ballroom	75'x96'	7,200	12'	400	600	n/a	300
Lake Superior Room	25'x50'	1,200	12'	64	100	35	48
Lake Michigan Room	25'x50'	1,200	12'	64	100	35	48
Lake Huron Room	25'x50'	1,200	12'	64	100	35	48
Lake Erie Room	26'x34'	950	12'	50	48	25	32
Lake Ontario	26'x34'	950	12'	50	48	25	32
Lyric Conference Center	34'x74'	2,516	12'	120	150	n/a	n/a
Lyric I	24'x34'	816	12'	40	70	26	40
Lyric II	25'x34'	850	12'	40	70	26	40
Lyric III	24'x34'	850	12'	40	80	26	40
Lyric Prefuntion Area	18'x88'	1,584	12'	n/a	n/a	n/a	n/a

## Hospitality Rooms

Duluth Room-515	n/a	400	8'	30	24	18	18
Lakeshore Room-514	n/a	400	8'	25	16	18	18
Harbor Room-415	n/a	350	8'	25	16	14	12
Bridge Room-414	n/a	350	8'	25	16	14	12



**Holiday Inn**  
& Suites

200 West First Street  
Duluth, MN 55802  
218-727-7492  
www.hiduluth.com